



Profile Video Display System

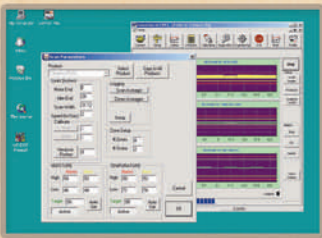
MOISTURE • COAT WEIGHT • THICKNESS

PROCESS SENSORS
CORPORATION 

Simple. Cost-Effective.

Flat-Panel Touch Screen Display

- 15" resistive touchscreen flat panel display
- Panel mount/wall mount/moveable arm mount
- 800x600 XVGA
- Windows XP, 40 Gig HD, 128 ram, CD ROM



Easy to Use Operator Interface

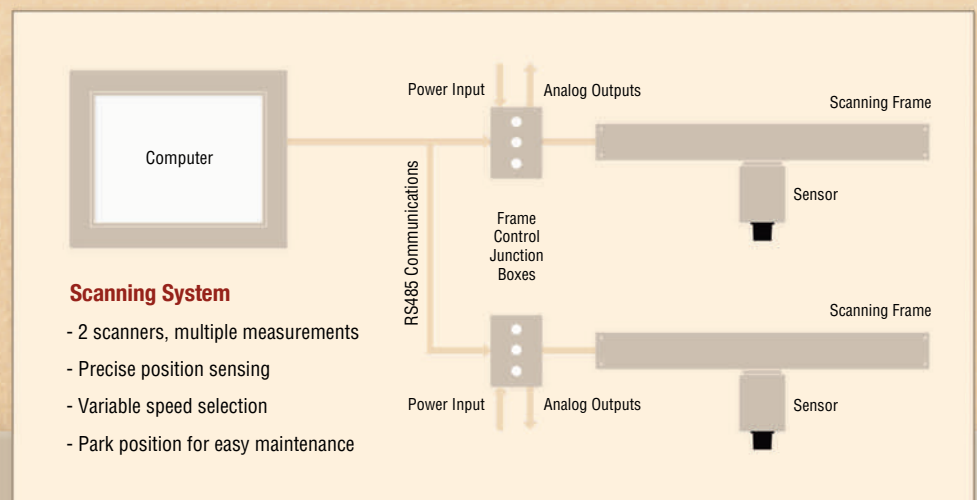
- Windows XP platform
- Single touch access
- Zone averaged profiles
- Ideal for roller gap control
- Machine direction trend

The **Profile Video Display System** is comprised of 3 components:

- MCT-300 NIR Transmitter
- Automated Scanning Frame
- PC with PVDS Scanner Software

The MCT-300 can be configured to measure moisture, coat weight or film thickness. The MCT-300 is mounted on the PSC scanner and is moved automatically across the web.

The scanner and MCT-300 communicate directly with PVDS Scanner Software. Two scanners can be controlled simultaneously with up to six web profiles displayed in real time.



Profile Video Display System: Maximum System Configuration

PVDS Profile Software Package



Process Sensors' proprietary profile software package is a Windows-based cross web profile package designed to be easy to view and comprehend. Up to six profiles can be viewed on screen for two separate scanning frames.

Profile Display System

- Cross web profile - up to 3 constituents
- 2-10 scan rolling average live profile
- Up to 50 zone averages updates at the end of each scan
- Cross web average updates at the end of each scan
- Adjustable target and alarm levels

Data Logging

- Cross web zone average
- Total cross web average
- Product identification
- Date & time

Scan Motion Setup & Selection

- Each recipe includes scan speed, scan width and park position
- Auto scan or manual jog via local control units

Product Code Selection

- User setup and selection of an unlimited number of product codes and associated web width recipes

Sensor Setup

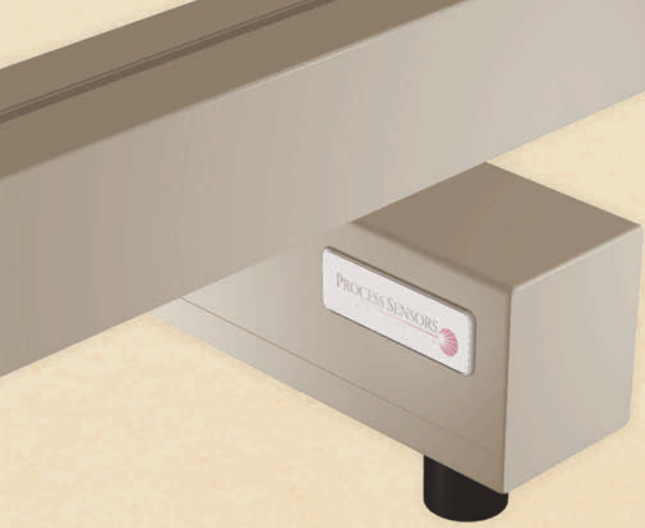
 Icon selectable choices for:

- Calibration
- Diagnostics
- Analog Output Scaling
- Internal Configuration Parameters

Outputs

- 4 "software controlled" analog outputs





SPECIFICATIONS:

Scanning Frame:

Aluminum extrusion (up to 200 inches/5 meters)
Internal timing belt drive
Flexible cable track for MCT power & signals
Safety limit switches
90-260 VAC 50/60 Hz, 15 Amp
DC Brushless Motor with built in position encoder

MCT-300

Cast aluminum NEMA 4 IP 65
Weight: 12 lbs.
Up to 3 measurements
120/240 VAC 50/60 Hz 2 Amp
24 VDC Power Optional
Operating temperature 0-50 °C

USA - Headquarters

Process Sensors Corporation
113 Cedar Street
Milford, MA 01757 USA
Tel: (508) 473-9901
Fax: (508) 473-0715
info@processsensors.com

Australia/Asia Pacific

PSC International
PO Box 219
Roseville, NSW 2069 Australia
Tel: (02) 9438 4544
Fax: (02) 9438 4322
seanh@processsensors.com

Europe

Process Sensors Europe
17 Thame Business Centre
Wenman Road
Thame Oxon OX9 3XA England
Tel: (44) 1844 266370
Fax: (44) 1844 212352
infouk@processsensors.com

Eastern Europe

Process Sensors Polska
Biuro Informacyjne
Techniki Pomiarowej
03-980 Warszawa
ul. Znanięckiego 16/23 Poland
Tel: (48) 22 6739526
Fax: (48) 22 6739527
t_stachowiak@poczta.onet.pl

For more information on Process Sensors instruments and accessories, visit our website at:

www.processsensors.com

PROCESS SENSORS

C O R P O R A T I O N



Process Sensors' manufacturing facility is located in Milford, Massachusetts, USA with distribution throughout Europe (Process Sensors-United Kingdom) and Australia & Asia (Process Sensors International). In addition, Process Sensors has agents and distributors located throughout the world.